

1 Ambient information for all



A smartphone app in combination with stations of real experience at the zoo in Bochum. As part of these stations, induction loops were installed for people with hearing. For the blind and visually impaired, a virtual, tactile map of the surroundings is available within the app, which helps users to find their way around the zoo, in combination with a real guidance system.

Location

Bochum

Key figures

560 thousand € total investment of which
280 thousand € ERDF
80 thousand € Co-financing of the State of North Rhine-Westphalia

Project partner

Hoba Steel GmbH
netzforum GmbH
Tierpark Bochum GmbH

Implementation period

2018 - 2021

Priority

Improving the innovative capacity of companies



6 InnKuBaTubes The dike of the future



Effective flood protection needs dikes that can be constructed and operated in a sustainable, resource-efficient and natural way. In addition, climate change is making it increasingly difficult to construct dikes. If the design basis changes and, for example, floods are higher than previously assumed, the dikes must be able to withstand them. This also means that, in case of doubt, they must be able to be overtopped without collapsing to the bottom. The research project offers an innovative solution to this challenge.

Location

Gütersloh

Key figures

1,504 thousand € total investment of which
752 thousand € ERDF
472 thousand € Co-financing of the State of North Rhine-Westphalia

Project partner

topocore GmbH
Technical University Ostwestfalen Lippe
Technical University Aachen

Implementation period

2020 - 2022

Priority

Improving the innovative capacity of companies



11 SEBARES Back-friendly aid for rescue workers

Many rescue workers need help at some point, because rescue services often still use simple muscle power, for example when patients must be transported up narrow stairs to the ambulance. In the long run, this is detrimental to the joints and backs of the rescue workers. The SEBARES project aims to remedy this situation with the development of an electronically driven, self-stabilizing transport chair.

Location

Cologne

Key figures

1,336 thousand € total investment of which
713 thousand € ERDF
468 thousand € Co-financing of the State of North Rhine-Westphalia

Project partner

SurgrIX AG
Chair of Medical Technology, RWTH Aachen
Stollenwerk & Cie. GmbH

Implementation period

2016 - 2019

Priority

Improving the innovative capacity of companies



16 Optics Center

Investment in sustainable infrastructure measures on the Steinfurt campus: With funding from the European Regional Development Fund, existing rooms on the Steinfurt campus were converted into modern high-tech laboratories. Personal and material resources for research were made available for this purpose. The various working groups of the Institute of Optical Technologies research methods for the generation, application and manipulation of light, for example for LEDs, lasers, photovoltaics, biomedicine or astronomical telescopes.

Location

Steinfurt

Key figures

4,187 thousand € total investment of which
2,093 thousand € ERDF
1,418 thousand € Co-financing of the State of North Rhine-Westphalia

Project partner

Münster University of Applied Sciences

Implementation period

2019 - 2022

Priority

Increase FUJ potential



21 Innovation Hub Bergisches RheinLand

The Innovation Hub Bergisches RheinLand is the first project of the Regionale 2025 that is being realized - in the immediate vicinity of the Gummersbach campus of the TH Köln. The Innovation Hub forms the central hub of the network of small and medium-sized enterprises (SMEs) in the region, the scientific institutions for research and teaching, the interest groups of the Oberberg, Rhein-Berg and Rhein-Sieg districts, and local politics. The hub strengthens the location and establishes a significant cooperation point for professors, students and companies, where new, digital solutions can be conceived and prototypically developed.

Location

Gummersbach

Key figures

5,970 thousand € total investment of which
2,985 thousand € ERDF
2,388 thousand € Co-financing of the State of North Rhine-Westphalia

Project partner

Technology Arts Sciences TH Köln

Implementation period

2020 - 2023

Priority

Improving the innovative capacity of companies



2 RaVis 3D

The project developed an assistance system for the visually impaired that detects the environment via radar and translates it into a 3D audio environment presented to the user via hearing aid. In addition, research was conducted on further user interfaces such as tactile outputs, smartphones or smartwatches which can be helpful for orientation.

Location

Bochum

Key figures

1,819 thousand € total investment of which
909 thousand € ERDF
667 thousand € Co-financing of the State of North Rhine-Westphalia

Project partner

Ruf - Universitäts Bochum
Kampmann Hörsysteme GmbH

Implementation period

2016 - 2019

Priority

Improving the innovative capacity of companies



7 MONOCAB OWL Paternoster Cycle Instead of Vicious Circle in Local Public Transport



Typical rural area? This public transport, car indispensable, temptingly mobile city life? A vicious circle that can be broken with an innovative idea based on the paternoster principle for IPNV, individual local passenger transport. This is MONOCAB. MONOCAB is a self-propelled cabin on the rails of the historic single-track railroad line between Lemgo and Extertal. And not just one: There will be many cabins running in both directions on one track - at the same time.

Location

Ostwestfalen Lippe

Key figures

3,996 thousand € total investment of which
1,998 thousand € ERDF
1,598 thousand € Co-financing of the State of North Rhine-Westphalia

Project partner

Technical University Ostwestfalen Lippe
University of Applied Sciences Bielefeld
Fraunhofer-Gesellschaft zur Förderung der angewandten Forschung e.V.
Landesseisenbahn Lippe e.V.

Implementation period

2020 - 2023

Priority

Increasing the implementation-oriented research and innovation potential



3 3D Competence Center Niederrhein

Additive manufacturing processes, also known as 3D printing, are increasingly becoming the focus of industrial application and represent significant potential for medium-sized industry in Germany. This potential ranges from prototype construction to the manufacture of end products. New products can be developed and manufactured more quickly. Additive manufacturing technologies can therefore be a cross-industry innovation and growth driver for the region.

Location

Kamp-Lintfort

Key figures

3,714 thousand € total investment of which
1,857 thousand € ERDF
1,485 thousand € Co-financing of the State of North Rhine-Westphalia

Project partner

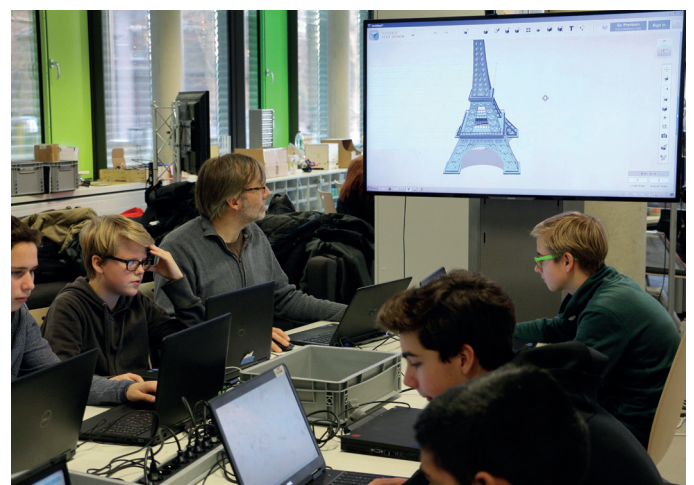
Hochschule Rhein-Waal
Hochschule Ruhr-West
RHTWH Aachen

Implementation period

2016 - 2019

Priority

Improving the innovative capacity of companies



8 Zinc-air accumulator



Our society needs electricity - available everywhere and at any time. In this age of smartphones, laptops and electric cars, it is hard to imagine life without rechargeable batteries. Current technologies also have disadvantages - such as the use of rare materials that are extracted with major damage to the environment. Researchers are therefore looking for alternative possibilities. And they have rediscovered a technology that has existed in its basic form since the 1970s: the zinc-air battery.

Location

Münster

Key figures

1,218 thousand € total investment of which
995 thousand € ERDF
270 thousand € Co-financing of the State of North Rhine-Westphalia

Project partner

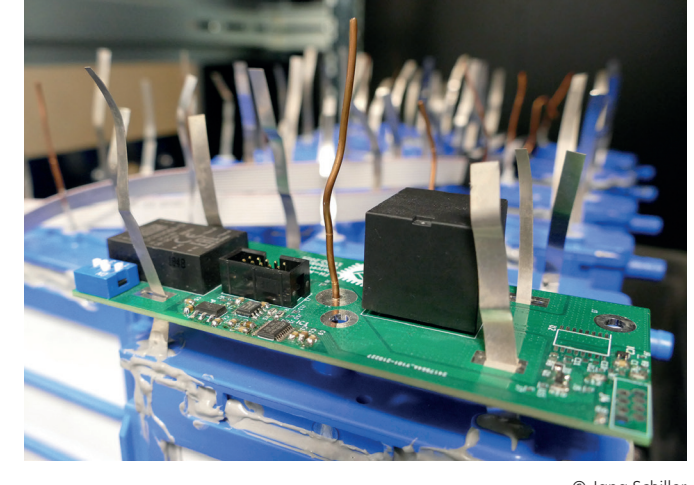
KUNDEL + Partner Ingenieure GmbH
EMC Automation GmbH
University of Applied Science Münster

Implementation period

2016 - 2020

Priority

Improving the innovative capacity of companies



13 EnerPrax The right energy storage systems of the future

If electricity comes purely from renewable sources in the future, the right energy storage systems will be needed. This is the only way to balance out fluctuations in feed-in, for example from wind turbines and solar panels, and to ensure a stable power grid. The EnerPrax project researched on how this can be achieved, which storage systems are the right ones and how they can be combined.

Location

Münster

Key figures

1,833 thousand € total investment of which
881 thousand € ERDF
427 thousand € Co-financing of the State of North Rhine-Westphalia

Project partner

University of Applied Science Münster
CElemwasser AG
Sauerbecker Ver- und Entsorgungsgesellschaft mbH
Gas- und Wärme-Institut Essen e.V.

Implementation period

2016 - 2020

Priority

Improving the innovative capacity of companies



4 ClimateSafe local responses to climate change

What are the concrete consequences of climate change for individual companies? This was the focus of the „Climate-Safe“ project. In the regions of the districts of Soest, Warendorf and Siegen-Wittgenstein, the project raised awareness among companies of the need to adapt to climate change, provided them with technical support and helped them to implement suitable adaptation measures. The most important results were finally summarized in a guideline, which now also helps other actors to carry out their own projects.

Location

Kreis Soest

Key figures

10,46 thousand € total investment of which
523 thousand € ERDF
340 thousand € Co-financing of the State of North Rhine-Westphalia

Project partner

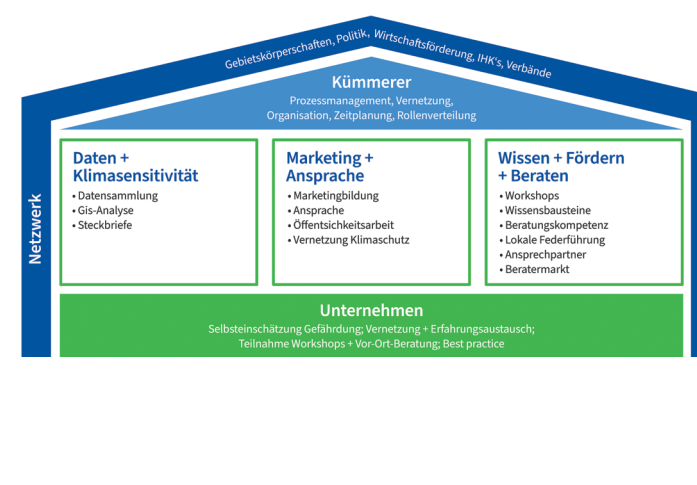
Kreis Soest
Technical University Darmstadt
Technical University Aachen

Implementation period

2020 - 2022

Priority

Improving the innovative capacity of companies



9 EnerScale



Lightweight, inexpensive and versatile solar films that can be used not only on roofs but also indoors: developing and mass-producing them is the goal of the EnerScale project. In this way the films will also contribute to the fight against climate change. After all, their use helps to avoid climate-damaging CO2.

Location

Jülich

Key figures

1,638 thousand € total investment of which
819 thousand € ERDF
335 thousand € Co-financing of the State of North Rhine-Westphalia

Project partner

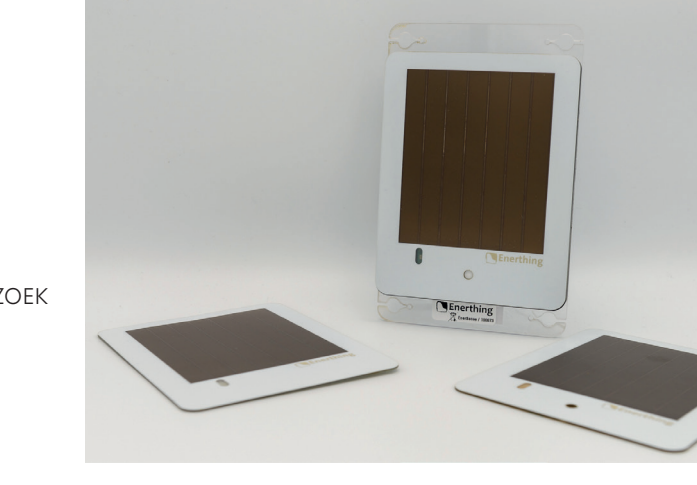
Enerthing GmbH
Zentrum für Organische Elektronik Köln GmbH - ZOEK
Forschungszentrum Jülich GmbH

Implementation period

2018 - 2022

Priority

Improving the innovative capacity of companies



5 Solar roof tile roof tiles from solar modules

A solar roof that looks like a normal house roof, but nevertheless enables a sustainable power supply for the building and in this way makes an important contribution to climate action - the company paXos has worked successfully on this idea together with the Technical University of Cologne. The Langenfeld-based company not only received an inquiry from the seat of the German President, but it decided for the mass-production of solar roof tiles for the general market.

Location

Cologne

Key figures

1,532 thousand € total investment of which
766 thousand € ERDF
362 thousand € Co-financing of the State of North Rhine-Westphalia

Project partner

paXos Consulting & Engineering GmbH & Co
Technical University Cologne

Implementation period

2019 - 2023

Priority

Improving the innovative capacity of companies



10 FlexiEnergy Flexible design of energy networks



Cross-sectoral planning of energy networks, considering electricity, gas, district heating and mobility, offers the opportunity to exploit synergies between different energy sources and to design energy systems that are both more cost-efficient and lower in CO2 emissions. The research and innovation project FlexiEnergy has investigated how this can work in practice and what recommendations can be derived from it for companies and policy.

Location

Düsseldorf

Key figures

2,449 thousand € total investment of which
1,211 thousand € ERDF
469 thousand € Co-financing of the State of North Rhine-Westphalia

Project partner

Westfalen Weser Netz GmbH
University of Paderborn
WestfalenWIND IT GmbH & Co. KG
UNITY AG für Unternehmensführung und Informationstechnologie
Energie Impuls OWL e.V.
Rechenzentrum für Versorgungsnetze Wahr GmbH (RZVN)

Implementation period

2018 - 2022

Priority

Improving the innovative capacity of companies



11 SEBARES Back-friendly aid for rescue workers

Many rescue workers need help at some point, because rescue services often still use simple muscle power, for example when patients must be transported up narrow stairs to the ambulance. In the long run, this is detrimental to the joints and backs of the rescue workers. The SEBARES project aims to remedy this situation with the development of an electronically driven, self-stabilizing transport chair.

Location

Cologne

Key figures

1,336 thousand € total investment of which
713 thousand € ERDF
468 thousand € Co-financing of the State of North Rhine-Westphalia

Project partner

SurgrIX AG
Chair of Medical Technology, RWTH Aachen
Stollenwerk & Cie. GmbH

Implementation period

2016 - 2019

Priority

Improving the innovative capacity of companies



12 iFoot intelligent bandage to protect the feet of diabetics

With more than six million patients, diabetes is one of the most widespread diseases in Germany. One consequence of this disease is the so-called diabetic foot syndrome (DFS). It affects around a quarter of the people with diabetes during their lives and cannot be cured. As part of a research project at the Niederrhein University of Applied Sciences, an intelligent bandage was developed to help improve the chances of a cure.

Location

Krefeld

Key figures

1,472 thousand € total investment of which
724 thousand € ERDF
419 thousand € Co-financing of the State of North Rhine-Westphalia

Project partner

University of Applied Science Niederrhein (FHS)
St. Vinzenz Hospital GmbH
CID GmbH Centrum für integrierte Diabetestherapie, Dienstleistungen f. Medizin, Netzwerke
PI Probalogik GmbH

Implementation period

2019 - 2022

Priority

Improving the innovative capacity of companies



13 EnerPrax The right energy storage systems of the future

If electricity comes purely from renewable sources in the future, the right energy storage systems will be needed. This is the only way to balance out fluctuations in feed-in, for example from wind turbines and solar panels, and to ensure a stable power grid. The EnerPrax project researched on how this can be achieved, which storage systems are the right ones and how they can be combined.

Location

Münster

Key figures

1,833 thousand € total investment of which
881 thousand € ERDF
427 thousand € Co-financing of the State of North Rhine-Westphalia

Project partner

University of Applied Science Münster
CElemwasser AG
Sauerbecker Ver- und Entsorgungsgesellschaft mbH
Gas- und Wärme-Institut Essen e.V.

Implementation period

2016 - 2020

Priority

Improving the innovative capacity of companies



14 MARTA

In MARTA, the partners develop mixed reality frameworks and tools in a creative environment that allow artists, technicians, designers and scientists to design, produce, install and market interactive digital mixed reality content for public spaces on an interdisciplinary and mutual basis. In this way, the artistic perspective is intended to create solution paths that can also be relevant for non-artistic issues.

Location

Düsseldorf

Key figures

1,186 thousand € total investment of which
759 thousand € ERDF
427 thousand € Co-financing of the State of North Rhine-Westphalia

Project partner

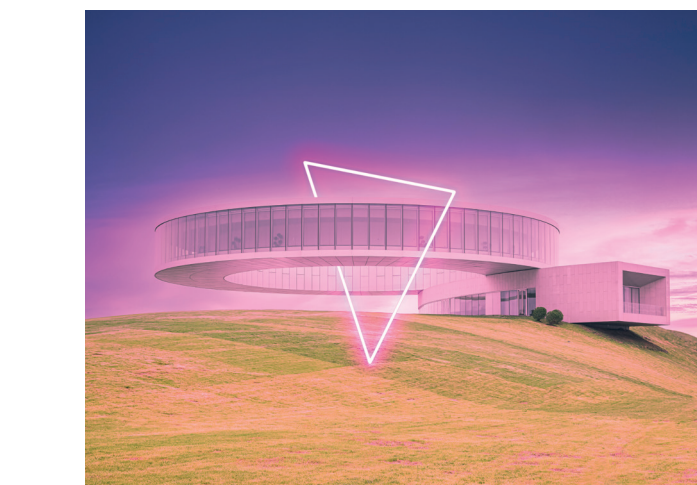
University of Applied Science Düsseldorf
Lavalabs Moving Images GmbH & Co. KG
NRV-Forum Düsseldorf GmbH
Tennagels Medientechnik GmbH

Implementation period

2018 - 2021

Priority

Improving the innovative capacity of companies



15 Smart Foodfactory Intelligent, digital food factory

Combining sustainability and economic efficiency in food production - and in this way counter-acting food waste, among other things: The Smart Foodfactory has set these goals. The smart food factory was built at the Innovation Campus in Lemgo and should be completed by summer 2022.

Location

Lemgo

Key figures

9,914 thousand € total investment of which
4,957 thousand € ERDF
3,965 thousand € Co-financing of the State of North Rhine-Westphalia

Project partner

Technical University Ostwestfalen Lippe

Implementation period

2018 - 2022

Priority

Increasing the implementation-oriented R&D potential



16 Optics Center

26 GeoIT A digital human-environment laboratory for schoolchildren



The digital human-environment school laboratory GeoIT in Wuppertal, Germany, is an innovative extracurricular learning venue for children and young people. Here, current topics such as climate change, renewable energies, digital agriculture and the effects of the Corona virus are scientifically investigated. Subsequent data evaluation and visualization trains geographical and scientific knowledge as well as informatics skills and strengthens science, technology, engineering, and mathematics (STEM) competences, especially among girls and young women.

Location
Wuppertal

Key figures
236 thousand € total investment of which
119 thousand € ERDF

Project partner
University of Wuppertal

Implementation period
2019 - 2022

Priority
Increasing the added value of SMEs through competence development and financial support



31 Emission-free city center Bielefeld

Making an entire city center emission-free – achieving this ambitious goal will require a whole series of clever and sustainable measures. The city of Bielefeld wants to try the experiment and implements many projects and ideas. These include, for example, bicycle parking facilities in the city center, a more environmentally friendly local transport system, more intelligent parking space management and a city logistics system that relies primarily on so-called hubs.

Location
Bielefeld

Key figures
17555 thousand € total investment of which
8,977 thousand € ERDF
7,622 thousand € Co-financing of the State of North Rhine-Westphalia

Project partner
City of Bielefeld

Implementation period
2020 - 2023

Priority
Reduction of greenhouse gas emissions in cities and regions



36 Jahrhunderthalle Bochum

The history of the Jahrhunderthalle Bochum begins in 1902, when the hall served as an exhibition hall for the Bochum Association for Mining and Cast Steel Production at an industrial and trade show in Düsseldorf, the so-called „small world exhibition“. 100 years after its erection in Bochum – on April 30, 2003 – the Jahrhunderthalle, extended by a functional annex and is now a listed building, was handed over to its new purpose as an „assembly hall for art“ (Gerard Manier) during the opening of the second season of the Ruhrtriennale.

Location
Bochum

Key figures
80,703 thousand € total investment of which
38,907 thousand € ERDF
32,594 thousand € Co-financing of the State of North Rhine-Westphalia

Project partner
City of Bochum
LEG State Development Corporation

Implementation period
2001 - 2008

Priority
Integrated projects for the revitalization of urban and rural areas



41 Functional and design upgrading of the pedestrian zone

The functional and urbanistic redesign of the pedestrian zone in Dorsten is one of the central key measures of the urban renewal project „Wir machen MItter“. The pedestrian zone as a place of encounter and social exchange will be permanently strengthened by enhancing the character of the area and the quality of the stay for residents and visitors of all ages.

Location
Dorsten

Key figures
29,174 thousand € total investment of which
14,587 thousand € ERDF
6,544 thousand € Co-financing of the State of North Rhine-Westphalia

Project partner
City of Dorsten
Dorstener Arbeit gemeinnützige Beschäftigungsgesellschaft mbH

Implementation period
2017 - 2023

Priority
Improving the integration of disadvantaged social groups into work, education and the community.



46 EcoHum Innovative substrate made from renewable raw materials

In 2005 and 2007, the MSTfactory Dortmund was built in two phases on a former industrial area in the south of Dortmund. With an industry-specific infrastructure of laboratories, equipment and office space, it supports young companies also by integrating them into industry clusters and simplifies the path to market-ready products from micro- and nano-technology.

Location
Bonn

Key figures
313 thousand € total investment of which
268 thousand € REACT-EU

Project partner
HG&TECH GmbH
Rheinische Friedrich-Wilhelms-Universität Bonn
Bio innovation park Rheinland v.V.

Implementation period
2022 - 2023

Priority
REACT-EU



27 Know-How Upgrade Future for Small Hotels

27 Know-How Upgrade Future for Small Hotels

In order to relieve the operators of small owner-managed hotels with 20 to 100 beds, to stabilize them and to secure their competitiveness, a cooperation structure was established. This optimizes internal structures and processes, thus increasing the value creation in the businesses and also their economic future.

Location
Winterberg

Key figures
188,639 thousand € total investment of which
94,319 thousand € ERDF
56,591 thousand € Co-financing of the State of North Rhine-Westphalia

Project partner
Winterberg Tourism and Economy GmbH

Implementation period
2016 - 2018

Priority
Increasing the competitiveness of SMEs through the development of innovative tourism infra-structures and services



28 Emission-free city center Dortmund

Dortmund wants to become more climate-friendly and is planning to move toward a zero-emission city center. To achieve this, the city introduced 12 measures to offer incentives to reduce the use of vehicles with internal combustion engines. The aim was to increase the share of journeys made in a climate-friendly manner in the city from 67 to 75 percent.

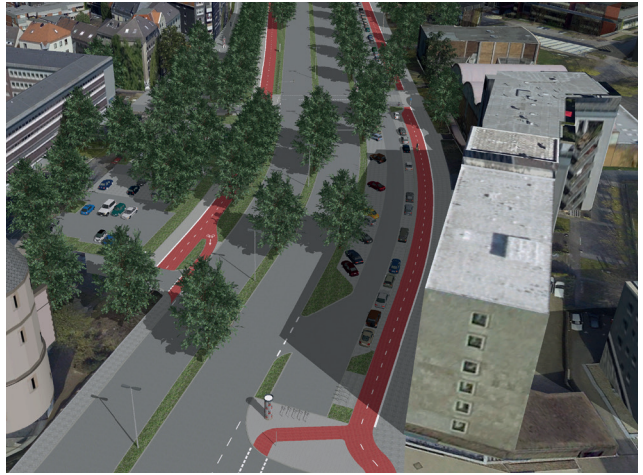
Location
Dortmund

Key figures
8,246 thousand € total investment of which
4,096 thousand € ERDF
2,271 thousand € Co-financing of the State of North Rhine-Westphalia

Project partner
City of Dortmund

Implementation period
2019 - 2022

Priority
Reduction of greenhouse gas emissions in cities and regions



29 DISKO - Digitalization as the key to climate protection Intelligent energy management of teaching swimming pools The Oberhausen Model (DISKO)

In Oberhausen, there are seven public educational swimming pools operated by the city and attached to schools. The swimming pools were built in the early 1960s. In order to reduce greenhouse gas emissions, a number of measures in the areas of digitalization, solar thermal energy, thermal insulation, ventilation, green roofs and LED lighting were implemented.

Location
Oberhausen

Key figures
1,050 thousand € total investment of which
4,500 thousand € ERDF
3,640 thousand € Co-financing of the State of North Rhine-Westphalia

Project partner
City of Oberhausen

Implementation period
2020 - 2023

Priority
Reduction of greenhouse gas emissions in cities and regions



30 ReBAU Regional resource turnaround in the construction industry

With around 44,000 jobs and 1.2 billion euros in sales, the construction sector is of enormous importance in the Rhine-land. This will increase significantly in the near future as a result of the structural change that has already taken place in parts but is still ahead. It also means that there is great potential to save on raw material and energy, CO2 emissions and the amount of waste generated.

Location
Jülich/ Rheinisches Revier

Key figures
1,050 thousand € total investment of which
529 thousand € ERDF
317 thousand € Co-financing of the State of North Rhine-Westphalia

Project partner
ZRR - Innovationsregion Rheinisches Revier GmbH

Implementation period
2020 - 2022

Priority
Reduction of greenhouse gas emissions in cities and regions



32 Erft.Forscher* Erft.Forscher (Erft.Researchers) have their eye on the new river

In order to improve the ecological condition of the Erft, the Erft Association wants to relocate the watercourse near Erftstadt-Gymnich to a new riverbed. The researchers assume that this will lead to a positive development of the ecological diversity in the coming years and that new plant and animal species can be observed. This process was accompanied and studied by the Erft.Forscher* as part of a citizen science project.

Location
Rhein-Erft-Kreis

Key figures
516 thousand € total investment of which
258 thousand € ERDF
154 thousand € Co-financing of the State of North Rhine-Westphalia

Project partner
Zweckverband Naturpark Rheinland
Rhein-Erft-Kreis
ERFTVERBAND

Implementation period
2019 - 2021

Priority
Ecological revitalization of neighborhoods, cities and peri-urban areas



33 Dortmunder U From Brewery to Creative Center

The „Dortmunder U“ is one of the city's best-known projects. Created as part of the European Capital of Culture RUHR2010, it is a new type of cultural center that combines art, research, cultural education and creativity. At the same time, it is a sign of new beginnings and structural change in the Ruhr region, providing new and economically relevant impetus not only in the city but also beyond.

Location
Dortmund

Key figures
46,516 thousand € total investment of which
23,258 thousand € ERDF
9,448 thousand € Co-financing of the State of North Rhine-Westphalia

Project partner
City of Dortmund

Implementation period
2008 - 2011

Priority
Development of cultural infrastructure



34 Zeche Zollverein

The Zollverein World Heritage Site – landmark of the Ruhr region, monument of industrial culture and symbol of change – is now known for beyond the borders of the Ruhr region: Shakti Xii with its winding tower, the visitor center with the orange-lit, largest free-standing escalator in Germany, the Ruhr and Red Dot Design Museum, PACT Zollverein and the cooking plant site.

Location
Essen

Key figures
7,368 thousand € total investment of which
1,237 thousand € ERDF
4,333 thousand € Co-financing of the State of North Rhine-Westphalia

Project partner
City of Essen
Zollverein Exhibition Company

Implementation period
2009 - 2016

Priority
Integrated projects for the revitalization of urban and rural areas



35 Phoenix West

When it became clear that the former coal and steel city of Dortmund needed a new perspective, the city and its partners developed a sustainable concept to make Dortmund an innovative place to live. PHOENIX is a central project for this: the former industrial site just five kilometers from the city center has been transformed into a forward-looking technology location. The EU supported this structural change from the very beginning.

Location
Dortmund

Key figures
132,000 thousand € total investment of which
30,318 thousand € ERDF
13,980 thousand € Co-financing of the State of North Rhine-Westphalia

Project partner
LEG State Development Corporation

Implementation period
2001 - 2008

Priority
Conversion and redevelopment of industrial and military areas (urban development)



37 Heilig-Kreuz-Kirche

At the time of its completion in 1929, the Heilig-Kreuz-Kirche by Josef Franke on the Bochumer Straße in the Gelsenkirchen district Uckendorf was one of the most spectacular church buildings of the early modern era and is thus of outstanding architectural significance, also on a supra-regional scale. It was decommissioned in August 2007. Thanks to the project, it will in future attract guests from the region as an exceptional venue and serve as a cultural focal point for the district.

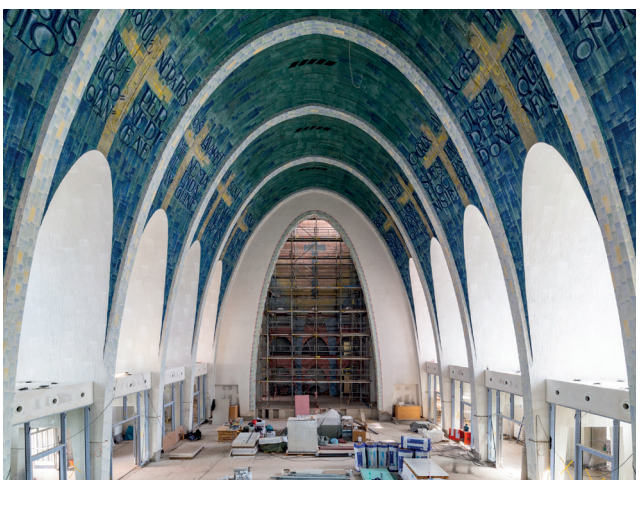
Location
Gelsenkirchen

Key figures
14,101 thousand € total investment of which
7,050 thousand € ERDF
3,621 thousand € Co-financing of the State of North Rhine-Westphalia

Project partner
City of Gelsenkirchen

Implementation period
2016 - 2022

Priority
Development and preparation of brownfield and conversion areas for urban development and/or ecological purposes



38 Nature and cultural landscape experience Lüner Lippeau

River landscape rich in contrasts: Along an adventure circular trail, visitors can gain insights into the nature conservation and European flora-fauna-habitat areas located on both sides of the River Lippe and immerse themselves in the near-natural river landscape. The circular trail invites interested people of all ages, on foot or by bike, to experience the nature of this floodplain landscape with its diverse fauna and flora and to experience the culturally and historically significant surroundings.

Location
Lünen

Key figures
6,554 thousand € total investment of which
3,273 thousand € ERDF
2,634 thousand € Co-financing of the State of North Rhine-Westphalia

Project partner
City of Hamm

Implementation period
2017 - 2021

Priority
Improving the integration of disadvantaged social groups into work, education and the community.



39 Districts parks Revierparks

Five Revierparks in the cities of Duisburg, Oberhausen, Gelsenkirchen, Herne and Dortmund were created about 50 years ago for the people of the Ruhr region. Together they are larger than 285 soccer fields. To meet changing demands, including accessibility, greater ecological awareness and new leisure activities, they were redesigned in the Revierparks 2020 project. In the process, each park has been given its own motto and a different focus. The aim is that as many people as possible feel at home in their parks.

Location
Regional Association Ruhr

Key figures
28,688 thousand € total investment of which
14,244 thousand € ERDF
8,546 thousand € Co-financing of the State of North Rhine-Westphalia

Project partner
Regional Association Ruhr

Implementation period
2019 - 2023

Priority
Improving the integration of disadvantaged social groups into work, education and the community.



40 Active and health park at the Katzohlbach

It is the only body of water that flows through the middle of Bad Driburg and drove half a dozen mills until about 100 years ago: the Katzohlbach. In its upper and lower reaches, it flows through meadows, but also passes through the old town and, among other things, the new „Mühlentor“ playground and the new active and health park opposite the train station. From the 1960s onwards, the Katzohlbach was reduced to a kind of concreted channel with the aim of carrying water out of the city as quickly as possible. That has changed in recent years. The Katzohlbach is experiencing a kind of ecological renaissance: in many places, the steep concrete has already had to give way and the stream has been newly bordered and naturalized in these areas. Now there is the Bad Driburger BACHLAUF with different stations. They are located in the area of the new adventure playground in the Katzohlbachauen and in the Active and health park.

Location
Bad Driburg

Key figures
788 thousand € total investment of which
394 thousand € ERDF
236 thousand € Co-financing of the State of North Rhine-Westphalia

Project partner
City of Bad Driburg

Implementation period
2019 - 2023

Priority
Development and preparation of municipal brownfield and conversion sites for urban development and ecological purposes.



42 Mönchengladbach Central Library Library of the 21st century

Mönchengladbach City Library was designed as a central library in the 1960s and was considered exemplary when it opened in 1964. It has been a listed building since 2018 and is considered outstanding in terms of urban development – not least because of its location. Now it was developed from a place of pure media lending to a public place of learning, networking and intercultural meeting place. The concept focuses on sufficient space, a high quality of stay and attractive architecture. The area was doubled from around 1,500 to 3,000 square meters.

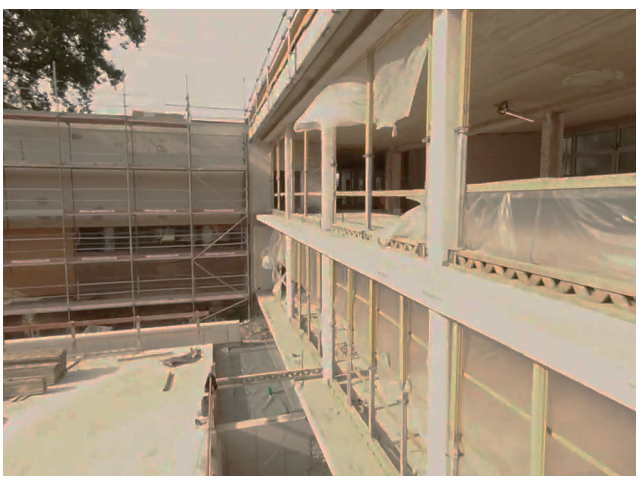
Location
Mönchengladbach

Key figures
18,201 thousand € total investment of which
9,100 thousand € ERDF
4,248 thousand € Co-financing of the State of North Rhine-Westphalia

Project partner
City of Mönchengladbach

Implementation period
2019 - 2023

Priority
Improving the integration of disadvantaged social groups into work, education and the community



43 Qualification of the youth meeting place Creation of an attractive place with high acceptance.

The education and sports campus in Kreuztal is visited by hundreds of students every day and also serves as a public open space. In order to further develop the extensive grounds of the school center as a place of recreation and learning for the children and residents of the city center and beyond, the school's outdoor areas were redesigned. The goal was to holistically transform the school center into a „green educational and sports campus“. The redesign of the public areas focused on upgrading the access routes and entrances, creating places for communication and lingering, establishing opportunities for movement and play, and ensuring accessibility and a functional path system.

Location
Kreuztal

Key figures
13,74 thousand € total investment of which
786 thousand € ERDF
4,248 thousand € Co-financing of the State of North Rhine-Westphalia

Project partner
City of Kreuztal

Implementation period
2017 - 2021

Priority
Improving the integration of disadvantaged social groups into work, education and the community



44 Wupperorte

The aim of the mobile stations, which are to be set up in all eight municipalities of the district „Rheinisch-Bergischer Kreis“, is to link different transport services in one place in a meaningful way. In the project, a network of 20 mobile stations of different size, significance and equipment were established in all municipalities of the district in two phases. The project of the mobile stations is based on a modular building block system, in which the mobile stations in each municipality are equipped individually and according to demand.

Location
Rheinisch-Bergischer Kreis

Key figures
1,157 thousand € total investment of which
579 thousand € ERDF
154 thousand € Co-financing of the State of North Rhine-Westphalia

Project partner
City of Kadavormwald

Implementation period
2019 - 2023

Priority
Sustainable urban and neighborhood development.



45 MST.factory Dortmund

In 2005 and 2007, the MSTfactory Dortmund was built in two phases on a former industrial area in the south of Dortmund. With an industry-specific infrastructure of laboratories, equipment and office space, it supports young companies also by integrating them into industry clusters and simplifies the path to market-ready products from micro- and nano-technology.

Location
Dortmund

Key figures
44,903 thousand € total investment of which
17,615 thousand € ERDF
17,615 thousand € Co-financing of the State of North Rhine-Westphalia

Project partner
City of Dortmund

Implementation period
2005 - 2009

Priority
R&I infrastructure



47 Green and recreational areas in Spenge

The valuable contribution that local recreation in nature makes to people's well-being has recently become clear, especially during the covid pandemic. For this reason, the „Green Infrastructure“ program provides targeted support for projects that promote nature and species conservation as well as the health of the population. One of these projects is the „Esterweg green corridor“ in Spenge, which has created numerous green and recreational areas.

Location
Spenge

Key figures
589 thousand € total investment of which
589 thousand € ERDF

Project partner
City of Spenge

Implementation period
2021 - 2022

Priority
REACT-EU



48 1000 Trees for Erfstadt

The last wish of a little girl came true in Erfstadt: Shortly before her death, the ten-year-old Antonia had wished for 1000 trees to be planted in the city. She even showed her wish in a letter to the Office for Green Spaces. ERDF contributes to this project by planting 203 trees in the town. The plantings will further enhance the city's parks and greenery, as these areas particularly serve as important recreational areas for the population.

Location
Erfstadt

Key figures
138 thousand € total investment of which
138 thousand € REACT-EU

Project partner
City of Erfstadt

Implementation period
2022 - 2023

Priority
REACT-EU



49 MINT.city-lab Doing handicrafts and tinkering for teenagers

How do you get even more young people interested in the promising science, technology, engineering, and mathematics (STEM/MINT) -subjects? By showing them how exciting and interesting mathematics, computer science, natural sciences and physics teaching can be. At the MINT-Lab Recklinghausen, children can take part in a variety of free classes during their holidays and learn, for example, how to build a nursery alarm system, construct an LED clock or encrypt data.

Location
Recklinghausen

Key figures
50 thousand € total investment of which
50 thousand € REACT-EU

Project partner
MINT-Bildung Ruhr/ Vest GmbH

Implementation period
2022

Priority
REACT-EU



50 Lake Park – Zülpich

Climate change is increasingly visible, and Lakepark Zülpich is also affected. The „Green Arena“ project therefore did not only make the site more attractive for visitors, but also converted it into an ecological and resilient way. Among other things, numerous new, particularly resilient trees, perennials and flower beds were planted and a resource-saving irrigation system was installed.

Location
Zülpich

Key figures
250 thousand € total investment of which
250 thousand € REACT-EU

Project partner
Seespark Zülpich gGmbH

Implementation period
2022 - 2023

Priority
REACT-EU

